

Installation Instructions:

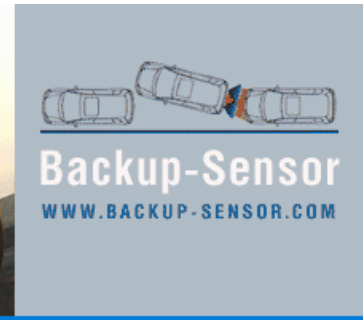
Contents of Box:

1. Sensors (either 2 or 4 depending on your order)
2. Control Unit
3. Siren
4. Drill bit
5. LED (Optional)



Powering up the system:

1. Determine that the reverse lights are working.
2. Turn the ignition on (do not start) and select reverse gear.
3. Use a voltmeter / circuit tester to identify if the reverse light is live. (or visually see if the lights are on).
4. The siren harness is equipped with the power connector for the system. Therefore connect the siren into the main control unit. Connect the red of this connector to the power supply of the reverse lights and the negative (black) to the ground of the lights.



Installing the Sensors:

1. These sensors are required to be drilled into the rear bumper and flush mounted. The sensors are designed with a rubber groove that holds the sensor firmly into the bumper.
2. When installing the 2 sensor model, measure the bumper and split the bumper into two halves and then measure the center of each half to find the ideal place to drill.
3. When installing the 4 sensor model, Split the bumper into quadrants (4 sections) and find the center of each quadrant to locate the ideal place to drill into the bumper.
4. To avoid ground reflection it is recommended that the sensors are located 0.5 m above the ground.
5. Drill the 27mm holes at a 90° to surface at determined locations. Route the sensor cables through the drilled holes and push the sensor housing into the drilled holes. Insert the ends of the sensors into the control unit.

Installing the Control Unit:

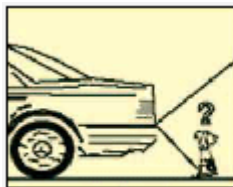
The control unit can be placed almost anywhere however the unit is most commonly placed in the trunk area of the vehicle.

Installing the Siren:

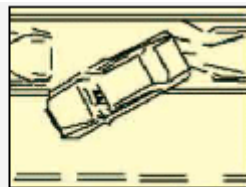
The siren is quite loud so it's best to place it in the trunk of the vehicle. Using the supplied tape,, press the siren into a safe place in the trunk area. Connect the siren to the control unit.

Installing the LED (Optional):

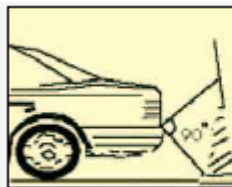
Mount the LED using the double sided tape on the back of the unit to the dash board of the vehicle and run the wires to the rear of the vehicle (if possible, neatly tuck the wire under the carpet and through into the trunk area. Insert the plug end into the control unit.



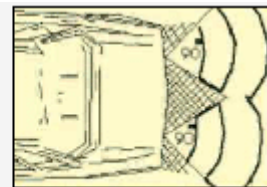
Prevent Accidents



Easier/Safer Parking



Obstacle Detection



Wider Detection